



**sophisticated
opentype fonts
for designers
creatives
visionaries and
trendsetters**

SPECIMEN MANUAL

PF Cosmonut Pro

OpenType® PS

supports Latin, Greek, Cyrillic,

Eastern European, Turkish, Baltic, Vietnamese

605 glyphs /font

professional kerning for all languages

3 opentype features /font

2 weights



contents

- 03. about Parachute®
- 04. OpenType® and Parachute® fonts
- 05. how to type multilingual text
- 06. font credits /specs
- 07. the designer
- 08. available styles /font weights
- 09. supported languages
- 10. the full character set
- 11. supported OT features
- 12. samples
- 19. acknowledgments

NOTE: All Parachute opentype font names come with the prefix "PF" (e.g. PF Fidelity Pro), a shortcut for "Parachute Fonts"

aboutparachute®

THE COOL, THE CLASSIC, THE ORIGINAL. Parachute® landed in 1999, but it wasn't till 2001 that it started operating as a full-scale type foundry. By then several designers had joined in to form a select group of open-minded, free-spirited individuals/friends. Graphic designers, illustrators, educators, typographers, with fresh ideas and a strong desire to design sophisticated typefaces which reflect current cultures and trends. Parachute® is based in Athens and is the major font supplier to most publishing houses and advertising agencies in Greece. It has built a strong network of valuable relationships with customers in Europe, United States, Canada and Australia, by providing custom font services and corporate font licensing. Its clientele includes multinational companies such as **Ikea, Vodafone, Nestle** and **Unilever**, advertising agencies such as **DDB, Leo Burnett, McCann Erickson, BBDO, Saatchi & Saatchi, Lowe, TBWA, Spot Thompson**, publications such as **National Geographic, Playboy, FHM, Elle, Vogue, Harper's Bazaar, Marie Claire, PC Magazine, Lucky, PC World, Votre Beauté** and many, many others. In the last 5 years Parachute's designers (a.k.a. Parachuters) have won three major typeface design awards, while their work has been featured and extensively presented in design-oriented magazines. The year 2003 marked the beginning of a new era for Parachute® with the release of a major 200-page catalog, which contained Greek and Latin typeface specimens. This catalog/book included several classic revivals of historical importance, as well as many original font designs. Since then an emphasis was placed on multilingual support and OpenType® technology. In the spring of 2004 Parachute's first opentype "Pro" font was released. **"Archive Pro"** an award winning typeface with multilingual support (over 1.350 glyphs/font), kerning for all European languages as well as advanced typographic features, was first presented at the **"Adobe Creative Days 2004"** forum, which was held in Athens, Greece. From then on, all Parachute® fonts have been redesigned to offer multilingual support, which includes major scripts such as Latin, Greek and Cyrillic.


opentype® and parachute® fonts


OpenType® is a new font format developed jointly by Adobe and Microsoft. This technology is becoming the new world standard for font development. There are three major advantages over older formats such as TrueType and Postscript: **1.** Cross-platform compatibility (a single file for both PC and Mac offering absolute compatibility between the two platforms) **2.** Multilingual support (multiple language character sets can be accessed from the same font). This is particularly useful to advertising agencies, publishing houses, multinational corporations and every other company small or large with accounts and products with an international flair. Most Parachute fonts come complete with a full range of characters to support all European languages **3.** Advanced layout features (an exciting function which provides access to advanced typographic features such as small caps, ligatures, oldstyle figures, swashes, etc). They enable the discriminating designer to set text professionally and add a touch of class to the page. Parachute openType fonts with advanced layout features and multilingual support are distinguished from the other "simple" openType fonts by the word "**Pro**" which is part of the font name. The advanced layout features cannot be accessed unless they are supported by your programs. Currently (early 2007), only InDesignCS, IllustratorCS, PhotoshopCS and QuarkXpress7 support these advanced features.

THE DESIGN OF PARACHUTE FONTS. Parachute fonts are designed by individuals who are familiar with Latin, Greek and Cyrillic. These are designers who have studied the particulars of each and every script in order to provide sophisticated, well-balanced, properly kerned and professionally designed typefaces in all different languages. Parachute online fonts are offered exclusively in OpenType format and they are released only after they have been thoroughly tested and reviewed.

How to type Multilingual text

It's never been easier to type or edit multilingual text. All you need is: **1.** a program which supports opentype fonts (see below), **2.** switch your keyboard to the languages you are interested in and **3.** use opentype fonts which support the specific languages (Parachute fonts support all European languages). Please note that if you only need to edit an existing multilingual text i.e. copy/paste or change fonts, you don't have to add or switch keyboards.

HOW TO SWITCH KEYBOARDS. First you add the new languages to the system. The steps are similar on both platforms **1.** On the PC (Windows XP) you go to the <control panel> section and choose <regional and languages options>. Select <languages> and follow the instructions to add the new languages (for earlier versions please refer to their manuals). Once added, you can switch between keyboards through the language bar that appears on the desktop or through a key sequence **2.** On the Mac (MacOsX) you go to <system preferences> and select <international>. Then you choose <input menu> and checkmark the languages you want to add. Once added, you can switch between keyboards through the language palette which appears on the desktop's menu bar or through a key sequence. Please visit Parachute's web site or click on the following link  to go directly to the <international keyboard layouts> support page. View them on screen or download for your reference.

ABOUT GREEK POLYTONIC. Add Greek Polytonic to the system by following above instructions. Once added, you need to know the key combinations for typing your text. Please visit Parachute's web site or click on the following link  to go directly to the <how to type Greek Polytonic support page>. View the typing instructions on screen or download for your reference.

MAJOR PROGRAMS THAT SUPPORT OPENTYPE. Currently (early 2007), the programs known to support OpenType are: InDesignCS, IllustratorCS, PhotoshopCS, Microsoft Office, CorelDraw and QuarkXpress 7.

SYSTEM REQUIREMENTS. Windows 2000 or later, MacOSX or later.

fontcredits

COSMONUT PRO. Spaced out and a bit nutty. This typeface revisits the futuristic atmosphere of the 50's and 60's cartoons and is complemented with an amazing, wacky and super cool series of 50 pictograms, designed by the master designer Dimitris Foussekis. This is a very popular informal typeface which was expanded recently into a 'Pro' version that includes Latin, Greek and Cyrillic.

format *opentype PS*

scripts *latin, greek, cyrillic, eastern european, turkish, baltic, vietnamese*

glyphs *605 /font*

kerning *applied to all languages*

pro features *3*

weights *2*

designer *Panos Vassiliou /Dimitris Foussekis*

© 2002-2006

thedesigner

PANOS VASSILIOU. Panos Vassiliou has conducted numerous seminars for leading Canadian companies and institutions such as Bank of Nova Scotia, Royal Bank and Sony Canada. He has organized and promoted several educational and cultural conferences. Two years after his graduation from the University of Toronto/Canada, where he studied Applied Science and Engineering, he pursued a teaching career at George Brown College/Toronto, first in the Information Systems Department and later in the Media & Graphic Arts Department. He has been Creative Director for the Canadian design firm AdHaus, former Publisher of the monthly magazine DNA (Greece) and Secretary-General for the Hellenic Canadian Congress (Ontario, Canada). He has been designing typefaces since 1993, including commercial fonts as well as commissions from **Vodafone, Nestlé, Ikea** and **National Geographic**. He is regularly invited as a guest speaker to conferences and seminars, to speak on typography and related topics. After moving to Greece, he started Parachute in 1999 setting the base for a typeface library that reflected the works of some of the best contemporary Greek designers, as well as creatives around the world obsessed with type. Some of his favorite designs include **Agora Pro, Square Sans Pro, Fuel Pro, Champion Script Pro**. He received a design award for his typeface **Archive** at the EBΓE AWARDS 2004. As early as spring 2004 he released **Archive Pro**, his first opentype font with special typographic features and multilingual support for all European languages including Greek and Cyrillic. **DIMITRIS FOUSSEKIS.** He is considered one of the most talented contemporary Greek illustrators. Among his influences are Edmund Guy and Philip Burke. He studied Geology and Paleontology, while he worked as a specialist designer for archeological findings. His designs appear weekly in magazines and often in advertising campaigns. He has designed **MyWay** and **ManicAttack** as well as part of **DaVinci Script** for Parachute, with the most recent being **Wonderland**.

stylesfontweights

Regular

AeEf

БeEЪ

ΔεEΞ

Bold

AeEf

БeEЪ

ΔεEΞ

NOTE: All weights contain the same language range and the full character set as seen on page 10.

supportedlanguages

Following is a list of all major encodings (codepages) and languages supported. This typeface supports over 100 languages simultaneously, integrating within the same font Latin, Greek, Cyrillic, Eastern European, Baltic, Turkish and Vietnamese scripts. If you would like to see a full character set of this typeface (including all special characters), go to the character set section on page 10.

MAJOR CODEPAGES

1252 Latin-1
 1253 Greek
 1250 Eastern European
 1251 Cyrillic
 1254 Turkish
 1257 Baltic
 1258 Vietnamese

MAJOR LANGUAGES

GB English	CZ Czech	UA Ukrainian
GR Greek	HU Hungarian	PL Polish
FR French	RO Romanian	EE Estonian
DE German	FI Finnish	LV Latvian
RU Russian	NL Dutch	SI Slovene
ES Spanish	NO Norwegian	LT Lithuanian
IT Italian	IS Icelandic	ID Indonesian
PT Portuguese	IE Irish	MT Maltese
CS Serbian	AL Albanian	PH Filipino
BG Bulgarian	HR Croatian	TW Taiwanese
TR Turkish	SK Slovak	VN Vietnamese
BY Belorussian	MD Moldovan	
SE Swedish	DK Danish	

supported **OT** features

1. ORNAMENTS/VARIOUS SYMBOLS: This feature may replace the bullet or other characters with any of the available pictograms. All of them are best accessed from the program's 'Glyphs Palette' when available. There is a total of 50 cosmo pictograms included with this font (see a full list on page 10)



3. ORDINALS: Replaces the sequence 'No' with the numero character (Nº).

No ▶ Nº

4. SLASHED ZERO: Replaces the regular form of zero with an alternate form which includes a slash through the counter. This is particularly useful when capitals are mixed with numbers in which case capital O may be difficult to distinguish from zero 0.

0 ▶ 0 20 OBJECTS ▶ 20 OBJECTS

NOTE: The characters 'various symbols' are shown as a low-resolution image (zooming is limited).

specimens

13. latin samples

15. greek samples

17. cyrillic samples

latinsamples

What follows is a set of Latin samples for PF Cosmonut Pro. Greek and Cyrillic script samples are covered in other sections of this specimen manual. For more samples, please visit our site at www.parachute.gr and try the FonTestDriver™, our advanced evaluation font tool which supports simultaneously Latin, Greek and Cyrillic.

COSMONUT LATIN

latin-greco melangé with recent cyrillic infusions

LOST IN SPACE

cornflakes with sugar and honey

KALEIDOSCOPE

SAVE THIS BOX AND ITS CONTENTS

GAME OVER!

technology is the campfire around which we tell our stories



out of space into your heart

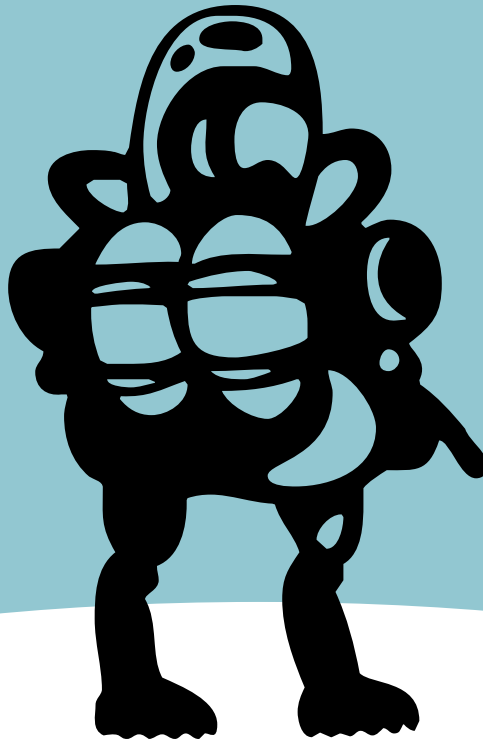
monthly guide to the best independent record releases

THE FUTURE IS IN BETA

NOTE: The characters 'various symbols' are shown as a low-resolution image (zooming is limited).

are you nuts?

No...I'm a COSMONUT



greek samples

What follows is a set of Greek samples for PF Cosmonut Pro. Latin and Cyrillic script samples are covered in other sections of this specimen manual. For more samples, please visit our site at www.parachute.gr and try the FonTestDriver™, our advanced evaluation font tool which supports simultaneously Latin, Greek and Cyrillic.

COSMONUT ΕΛΛΗΝΙΚΑ

η αποστολή μας ολοκληρώθηκε με απόλυτη επιτυχία

αστροναύτης

παιδική χαρά στο κέντρο της Αθήνας

ΚΙΝΟΥΜΕΝΑ ΣΧΕΔΙΑ

η χιονάτη και οι εφτά νάνοι

ΠΑΙΔΙΚΗ ΧΑΡΑ

νέα cornflakes με πραγματική σοκολάτα και μέλι



ΤΟ ΞΥΛΟ ΒΓΗΚΕ ΑΠΟ ΤΟΝ ΠΑΡΑΔΕΙΣΟ

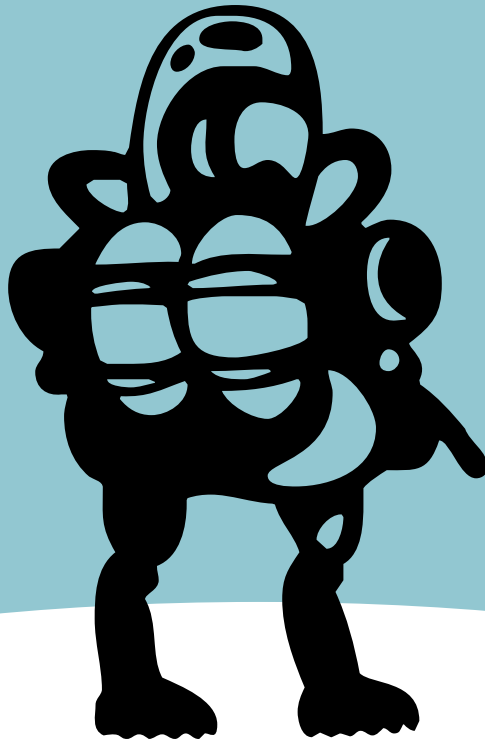
η ελληνική παραδοσιακή φιλοξενία στα μεγαλύτερα αστικά κέντρα

ΧΑΜΕΝΟΙ ΣΤΟ ΔΙΑΣΤΗΜΑ

NOTE: The characters 'various symbols' are shown as a low-resolution image (zooming is limited).

ap xiou nuts?

No...άι εμ ε COSMONUT



cyrillicsamples

What follows is a set of Cyrillic samples for PF Cosmonut Pro. Greek and Latin script samples are covered in other sections of this specimen manual. For more samples, please visit our site at www.parachute.gr and try the FontTestDriver™, our advanced evaluation font tool which supports simultaneously Latin, Greek and Cyrillic.

COSMONUT КИРИЛЛИЦА

Лучшие 25 менеджеров в промышленности музыки

сделано в России

живые картины и богатые цвета

РЫБНОЕ МЕСТО

не испытано на животных

куда пойти в свободное время в Афинах

паращюот

специальное помещение для детей



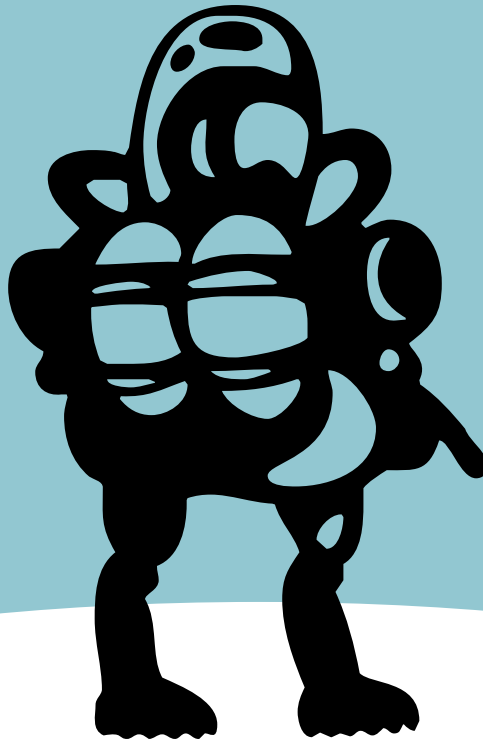
Эстетика – это политика будущего

фейс контроль

NOTE: The characters 'various symbols' are shown as a low-resolution image (zooming is limited).

ap to nuts?

Ho...au эм а COSMONUT



acknowledgments

TYPEFACES. The typeface used in this specimen manual for body text, headers, footers and page numbering is PF Square Sans Pro. PF Bulletin Sans Pro is used for page titles.

PRODUCTION. This manual was produced using InDesign®CS2, Illustrator®CS2 and Photoshop®CS2 from Adobe® and Word®2004 from Microsoft®. Multilingual sample text was originally set in Microsoft Word for Windows. Final document was created in MacOSX with InDesign®CS2.

TRADEMARKS. Parachute, the Parachute logo, Agora Sans, Agora Serif, Agora Slab, Astrobats, Alfabetta, Amateur, Baseline, Beatnick, Beau Sans, Bodoni Script, Bulletin Sans, Champion Script, Cosmonut, DaVinci Script, Din Text, Din Display, Fidelity, Fuel, Fusion Sans, PFGoudy Initials, PFGoudy Ornaments, Scandal, Handbook, Haus Square, Highway Sans, Hellenica, Hellenica Serif, Isotext, Kids, Kidstuff, Libera, Manic Attack, Mechanica, Mediterra, Monumenta, Playskool, Psychedelia, Rafskript, Reminder, Square Sans, Signskript, Stamps, Stamp Frames, Synch, Videotext, Wonderland, Wonderbats, are either registered trademarks or trademarks of Parachute and/or Parachute Worldwide. Apple, Mac, Macintosh and TrueType are trademarks of Apple Computer Inc. Adobe, InDesign, Illustrator, Photoshop and PostScript are trademarks of Adobe Systems Incorporated. Microsoft, Windows and OpenType are trademarks of Microsoft Corporation.



Parachute® Worldwide

35 Falirou Street, Athens 11742 GR | T. +30 210 9210220 F. +30 210 9210221
 info@parachute.gr | www.parachute.gr

You may reproduce this manual and distribute it freely, provided you do not edit the document and/or remove the copyright information. Parachute assumes no responsibility or liability for any errors or inaccuracies that may appear in this document. Contents are subject to change without notice.