

OPEN•TYPE
Clarice

A Sophisticated
Family with
Nine Weights
Small Caps
Petite Caps
Lining Figures
Old Style Figures
Tabular Figures
Ligatures

Book

Book Italic

Medium

Medium Italic

Bold

Bold Italic

Black

Black Italic

Inline

CAPS SMALL PETITE

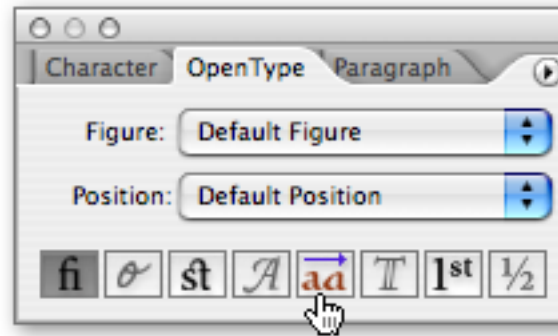
Clarice Book, Medium, Bold and Black all have three separate sets of Capitals. **CAPS** matching the height of the cap-height, **SMALL CAPS** that are slightly shorter and **PETITE CAPS** matching the lower case x-height.

SMALL CAPS are easily accessible in both Illustrator and InDesign. The process of calling out **PETITE CAPS** are different in the two applications.

To convert lower case to Petite Caps:

ILLUSTRATOR CS

Swipe lower case letters only. Then click the “Stylistic Alternate” button in the OpenType tab.



INDESIGN CS

Swipe lower case letters only. Then through the Character Tab, got to “OpenType/Stylistic Sets/Set 1.” Set this configuration up as a Character Style and Petite Caps will be available with one click through the Character Style Tab.

Default Proportional
Lining Figures
Also available as
Tabular Lining Figures

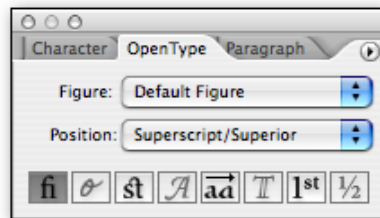
0123456789

Proportional
Old Style Figures

0123456789

Superior Figures

0123456789



To convert Lining Figures to OpenType Superior Figures:

ILLUSTRATOR CS

Swipe lower Lining Figures. In the OpenType tab, select Figure: Default Figure and Position: Superscript/Superior

INDESIGN CS

Swipe lower Lining Figures. In the Character tab, go to OpenType/ Superscript/Superior