

Lakeside

A MARK SIMONSON STUDIO FONT

USER GUIDE

Congratulations on purchasing a license to Lakeside! This handy guide will help you get the most from your new typeface. Lakeside uses advanced OpenType technology to provide a level of control that is not possible with traditional script typefaces. Here's how . . .

Little Printer → *Little Printer*

Look familiar? This is the way script typefaces are usually designed. Characters in isolation are shown on the left; on the right we see how they fit together. The shapes work well enough when they connect, but not so well when they are alone or at the beginning or end of a word. And notice how the length of the crossbar of the t must be compromised to avoid making combinations like “ittl” look messy. When a character falls at the end of a word, an unnecessary connecting stroke remains. Some characters, like the s and r, look incomplete when there's nothing to connect to on the left side. With a traditional font there can only be one shape for each character, so such compromises are inevitable. Is there a better way? You bet!

Little Printer → *Little Printer*

Better Living Through OpenType. With Lakeside, each character automatically takes into account what's around it and chooses one of several possible variations for the best aesthetic effect. And notice how the crossbar on the t stylishly extends itself when space allows. It's like like having a custom lettering artist at your fingertips!

Director's Chair → *Director's Chair*

Titling Caps. Lakeside features a set of special caps that are larger than the standard set for an extra special look. Just choose “Titling Alternates” from your OpenType palette or menu.

Copyright MCMXLIV → *Copyright MCMXLIV*

All Caps Alternates. Set a script typeface in all caps? Never! But with Lakeside, you can. If you choose “All Caps” style* in OpenType-savvy programs, Lakeside will automatically use a special set of smaller, plainer caps, suitable for all-caps settings. You can also apply this style by choosing “Small Caps.” With this method, only lowercase characters are affected.

* Note: Using the shift key or caps lock key will not invoke this feature.

More Lakeside Features

Scriptomatic → Scriptomatic

Alternate Capital S. The model on which Lakeside was based (the title lettering in the 1944 film *Laura*) featured a capital S that is common in formal penmanship but unusual in script typefaces (above, right). A more typical style S is included as standard (above, left), but the original form can be selected by choosing Stylistic Set 1 or Stylistic Alternates, depending on what program you're using. The alternate cap S is available for either the normal cap S or the titling style cap S.

Extended Language Support. Lakeside has support for the following languages: English, French, Spanish, Portuguese, Basque, German, Swedish, Norwegian, Danish, Finnish, Icelandic, Czech, Polish, Hungarian, Lithuanian, Croatian, Esperanto, Maltese, Turkish, Romanian, and Albanian.

44/100 → 44/100

Automatic Fractions. If you type numbers + forward slash + numbers, select all three parts and choose "Fractions" from your OpenType palette or menu, a properly formatted fraction will result.

Other Tips

You should normally use the default spacing for Lakeside. In other words, don't set it tighter or looser. Otherwise, this happens:

Too Tight ... Too Loose

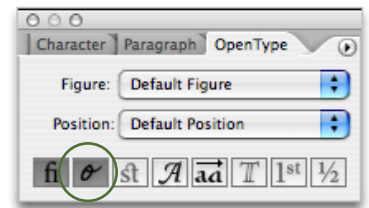
However, if you want a spaced out look, try typing spaces between the letters (and triple spaces between words). This forces the nonconnecting forms of the characters to be used. Once typed this way, you can adjust the spacing to your taste. For example:

Special Situations

It's an interesting and unusual look that may be perfect for that special project.

How to Get the Most from Lakeside

Lakeside does most of its magic using an OpenType feature called **Contextual Alternates**. Programs such as Adobe InDesign and QuarkXPress (7.0 or later) support this feature automatically. In other programs, such as Adobe Illustrator CS1 and later and Mellel (Mac OS only), the feature may be “off” by default. In such a case, you simply need to switch it “on” using the OpenType palette or menu in the program.



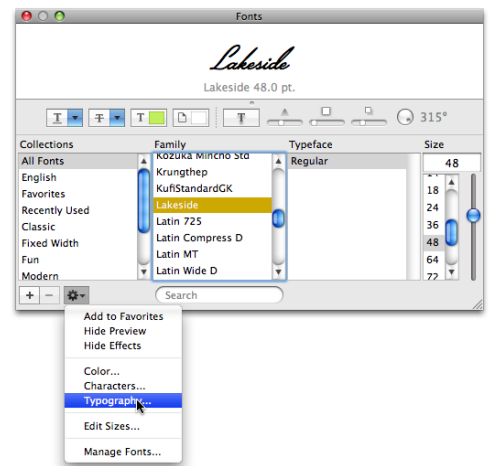
If the character that Lakeside automatically chooses is not the one you want, you can either turn off Contextual Alternates for that character, or choose a different character from the Glyph palette.

Bug Alert: Please note that the Mac version of Photoshop (CS1 and CS2) is supposed to support this feature, but because of a bug in the program, it doesn't always work correctly and “Contextual Alternates” may be dimmed and unselectable in the OpenType menu. As a work-around, you can set your text in Illustrator or InDesign, convert it to outlines, and then copy and paste into Photoshop. This bug has been fixed in the Mac version of Photoshop CS3. (Windows versions of Photoshop, CS1 or later, also work correctly.)

Support for Contextual Alternates in other programs is still limited at the time of this writing (Winter 2008). The situation will improve with time. Until then, you can set your text in Illustrator or InDesign, convert it to outlines, and then copy and paste into your program as a graphic image.

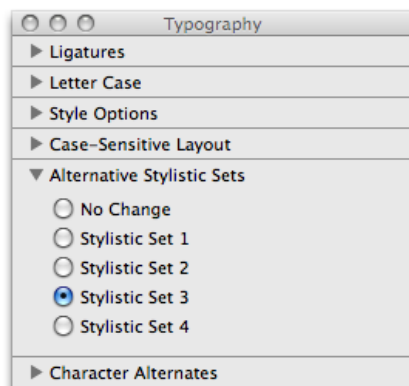
A Work-Around for Some Mac Applications that Don't Yet Support Contextual Alternates

If you are working on MacOS X (10.4 or later), and you are using an application that supports the Font panel (shown at right) such as Pages, Keynote, or other “Cocoa” applications, you can use **Stylistic Sets** to manually select alternate characters. Choose “Typography” from the pop-up menu at the lower left corner of the panel (the one with the little gear icon).



Select a character in your text (set in Lakeside), and then choose one of the Stylistic Sets from the Typography palette (shown below).

Press Press



The sets have the following effects in Lakeside:

- SS2 = Use beginning form (b, h, i, j, k, l, m, n, p, r, s, t, x).
- SS3 = Use ending form (a, b, c, d, e, g, h, i, j, k, l, m, n, o, p, q, r, s, t, u, v, w, x, y, z).
- SS4 = Use stand-alone form (b, h, i, j, k, l, m, n, p, r, s, t, x).

Note: Accent and ligature forms are included.

The Complete Character Set

AaAaa BbBbbb b CccCcc DddDddd EEEee FffFfff fffFfff GgGgg
HhHhhh h Iiii i Jjjj j Kkkkkk k Llllll l Mmmmm m
Nnnnn n OooOoo Pppppp p Qqqqq q Rrrrrr r SssSsss s SSSs
Ttttt t t t t UuuUuu Vvvv v Wwww w Xxxxx x Yyyy y Zzzz z AaAaa
AaAaa AaAaa AaAaa AaAaa AaAaa AaAaa AaAaa AaAaa
EeEee EeEee CcCcc DddDddd DddDddd EEEee EEEee EEEee
EeeEee EeeEee EeeEee EeeEee EeeEee EeeEee GgGgg GgGgg GgGgg
GgGgg HhHhh HhHhh Iiii i Iiii i Iiii i Iiii i Iiii i Iiii i
Iiii i Iiii i Jjjj j Jjjj j Kkkkk k kkk k Lllll l Lllll l
Lllll l Lllll l Lllll l Mmmmm m Mmmmm m Mmmmm m mmm m
Nnnnn n OooOoo OooOoo OooOoo OooOoo OooOoo OooOoo OooOoo
OooOoo OooOoo EeEee Rrrrrr r Rrrrrr r Rrrrrr r SssSsss s
SssSsss s SssSsss s SssSsss s SssSsss s Ttttt t t t t Ttttt t t t t
Ttttt t t t t UuuUuu UuuUuu UuuUuu UuuUuu UuuUuu UuuUuu UuuUuu
UuuUuu UuuUuu UuuUuu Wwww w Wwww w Wwww w Wwww w Yyyy y
Yyyy y Yyyy y Zzzz z Zzzz z Zzzz z DddDddd Pppppp p
[1234567890] (@#%&'()*+,-./:;<=>?@[]^_`{|}~¡¢£¥¦§¨ª«¬®¯°±²³´µ¶·¸¹º»¼½¾¿ÀÁÂÃÄÅ Æ Ç È É Ê Ë Ì Í Î Ï Ñ Ò Ó Ô Õ Ö × Ø Ù Ú Û Ü Ý Þ ß à á â ã ä å æ ç è é ê ë ì í î ï ð ñ ò ó ô õ ö ÷ ø ù ú û ü ý þ ÿ